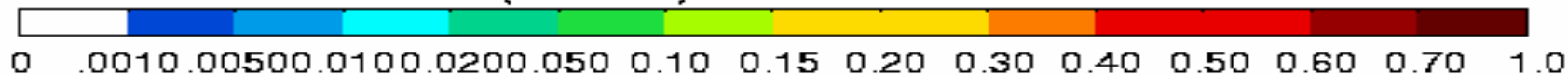
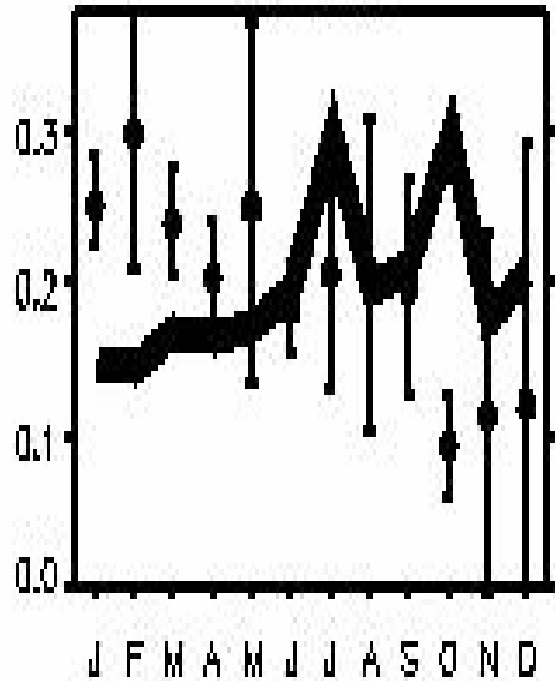


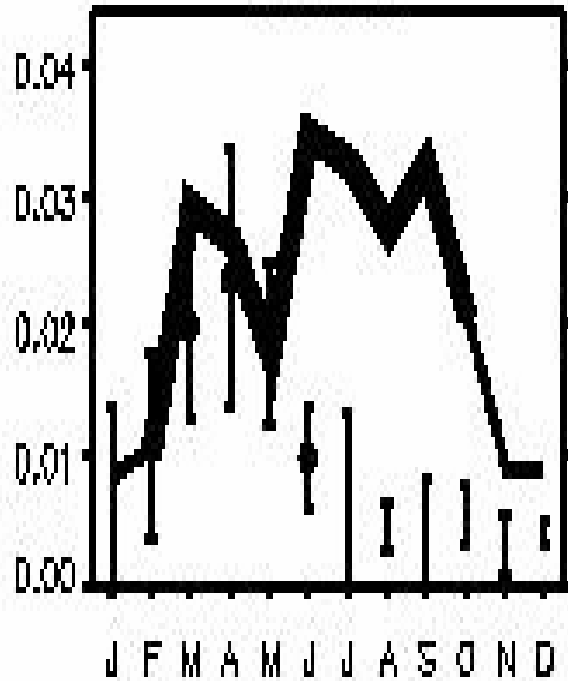
AOT (550nm) from MOZART 2000



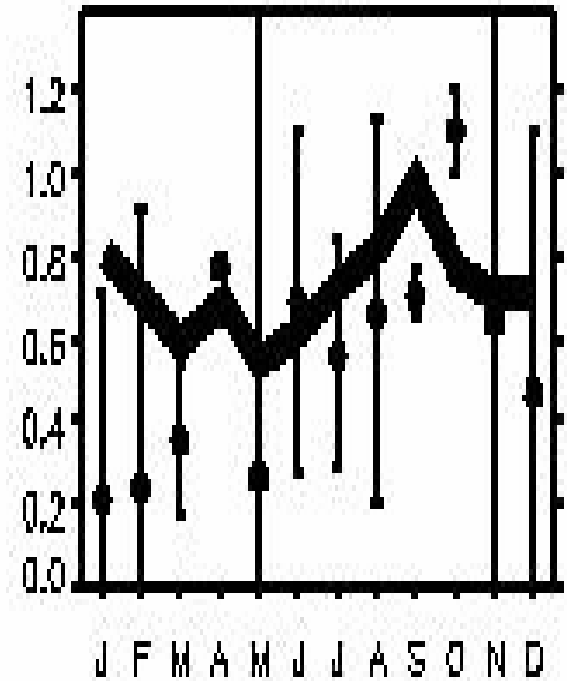
81 Sblis



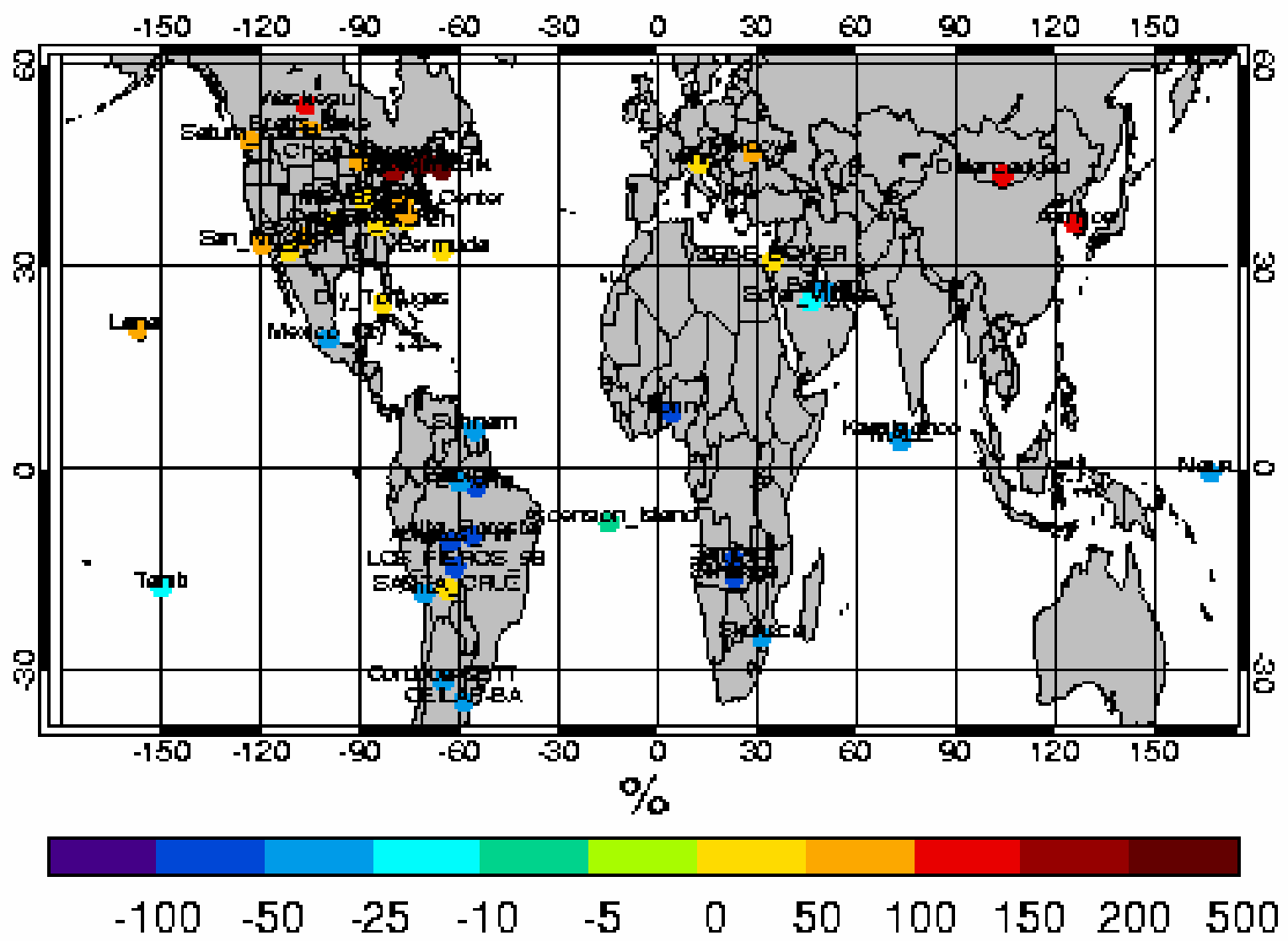
82 MnLoc

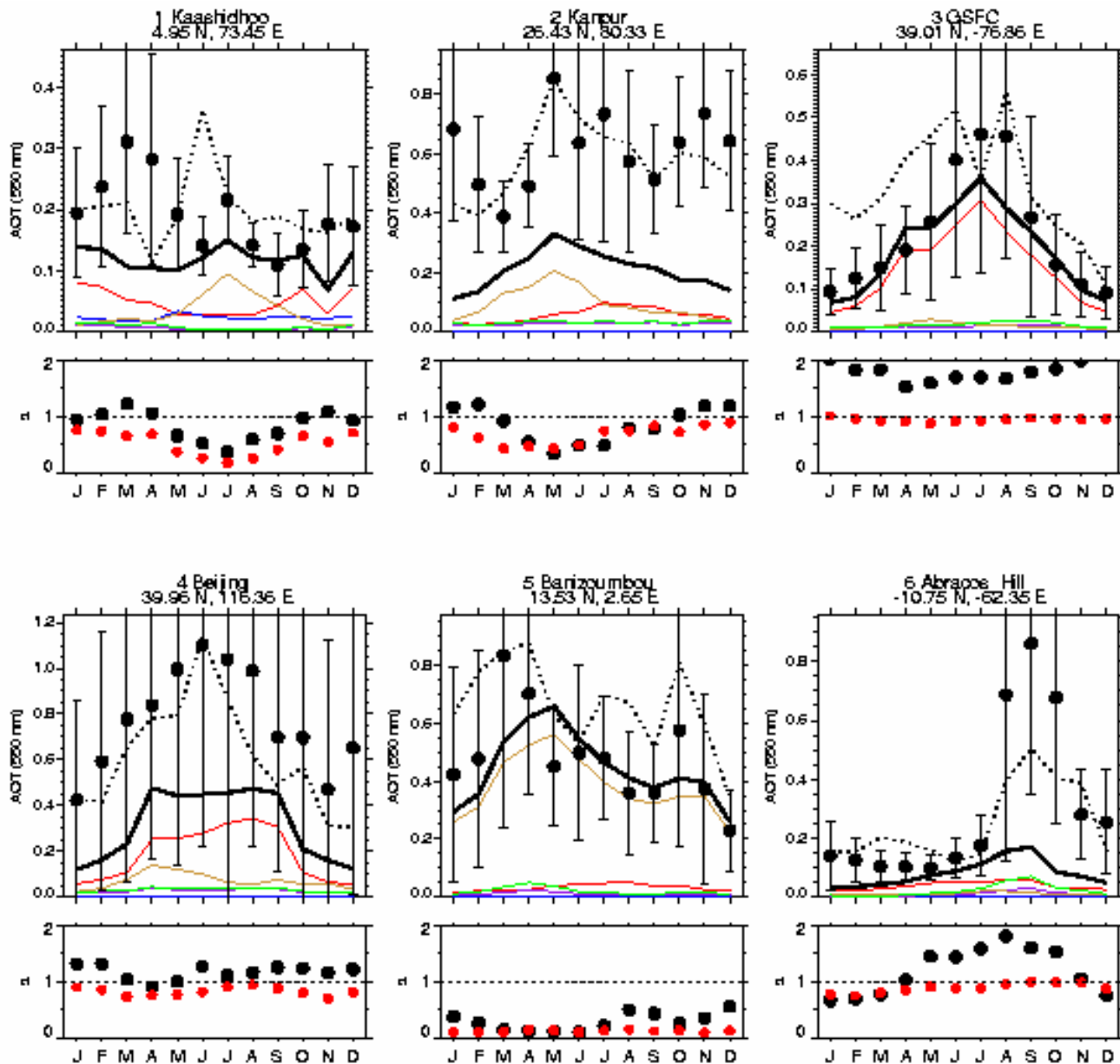


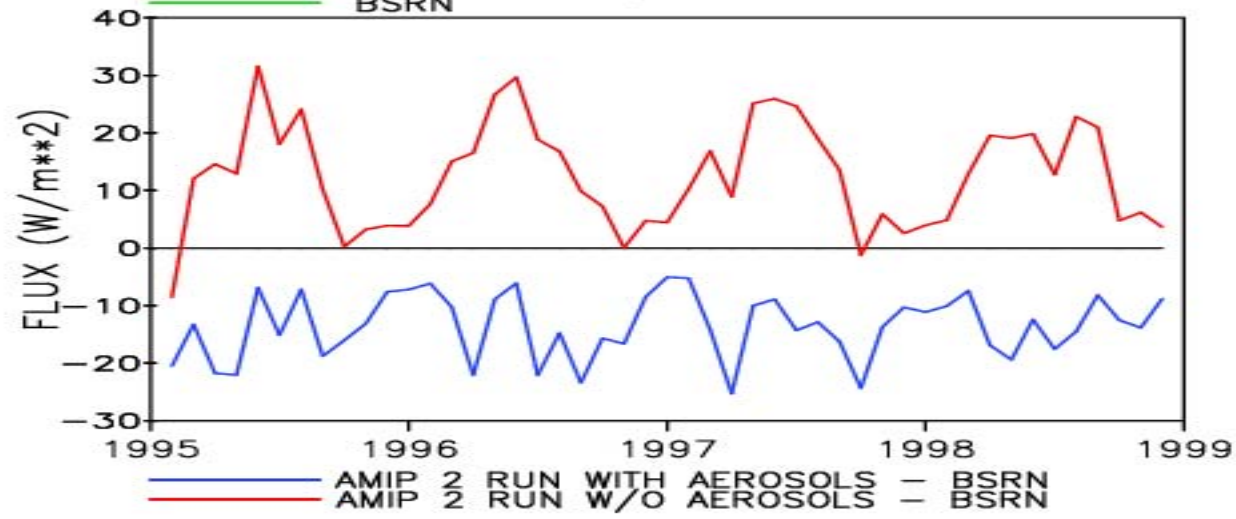
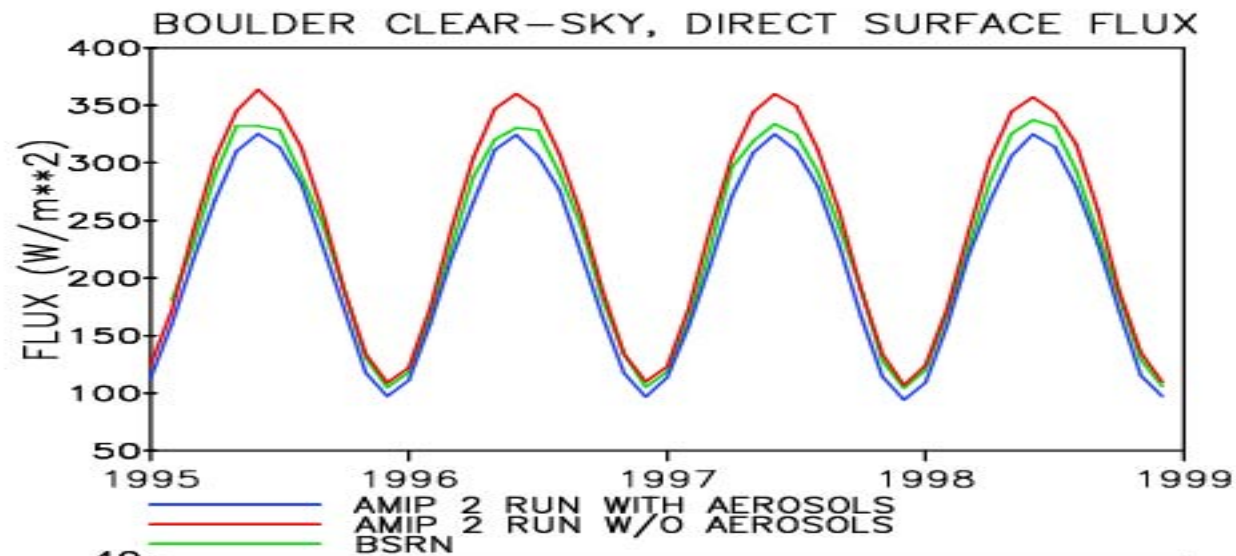
83 Bndvl

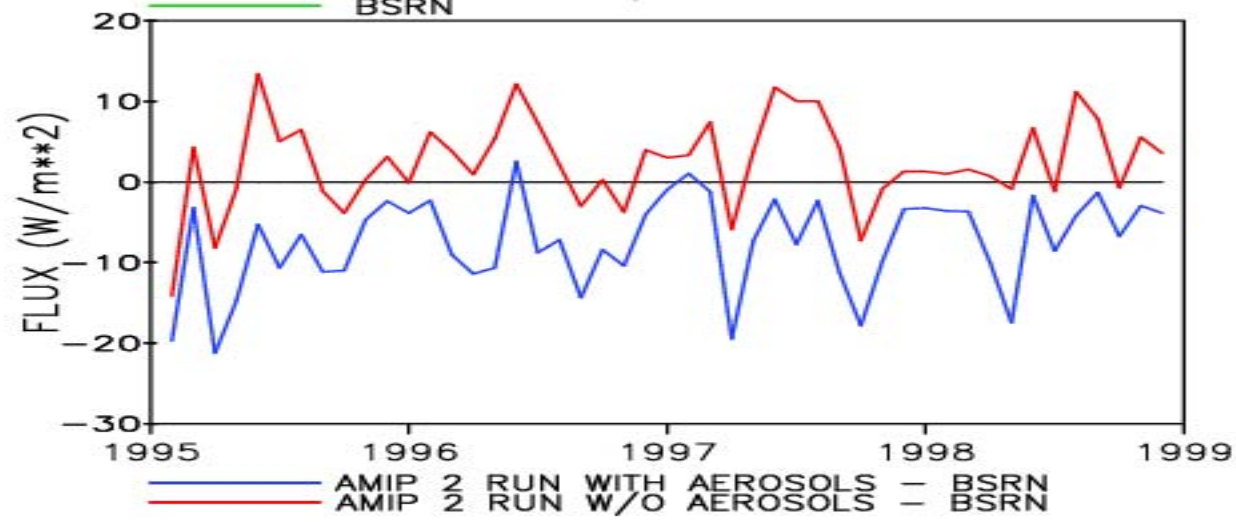
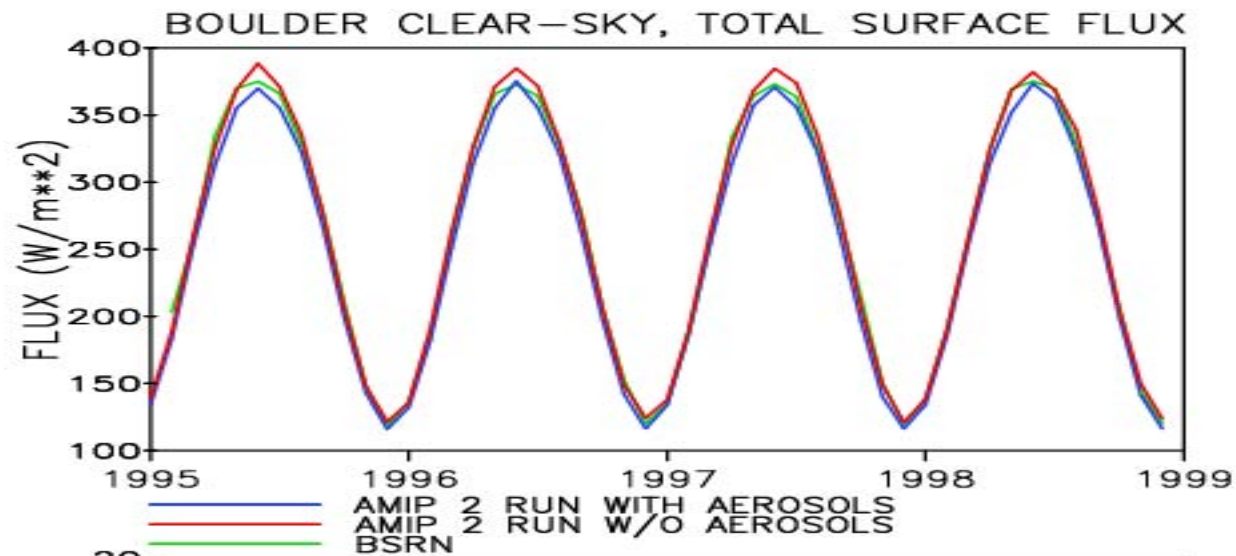


Relative difference (%) AOT CM2Q and AERONET for 2000

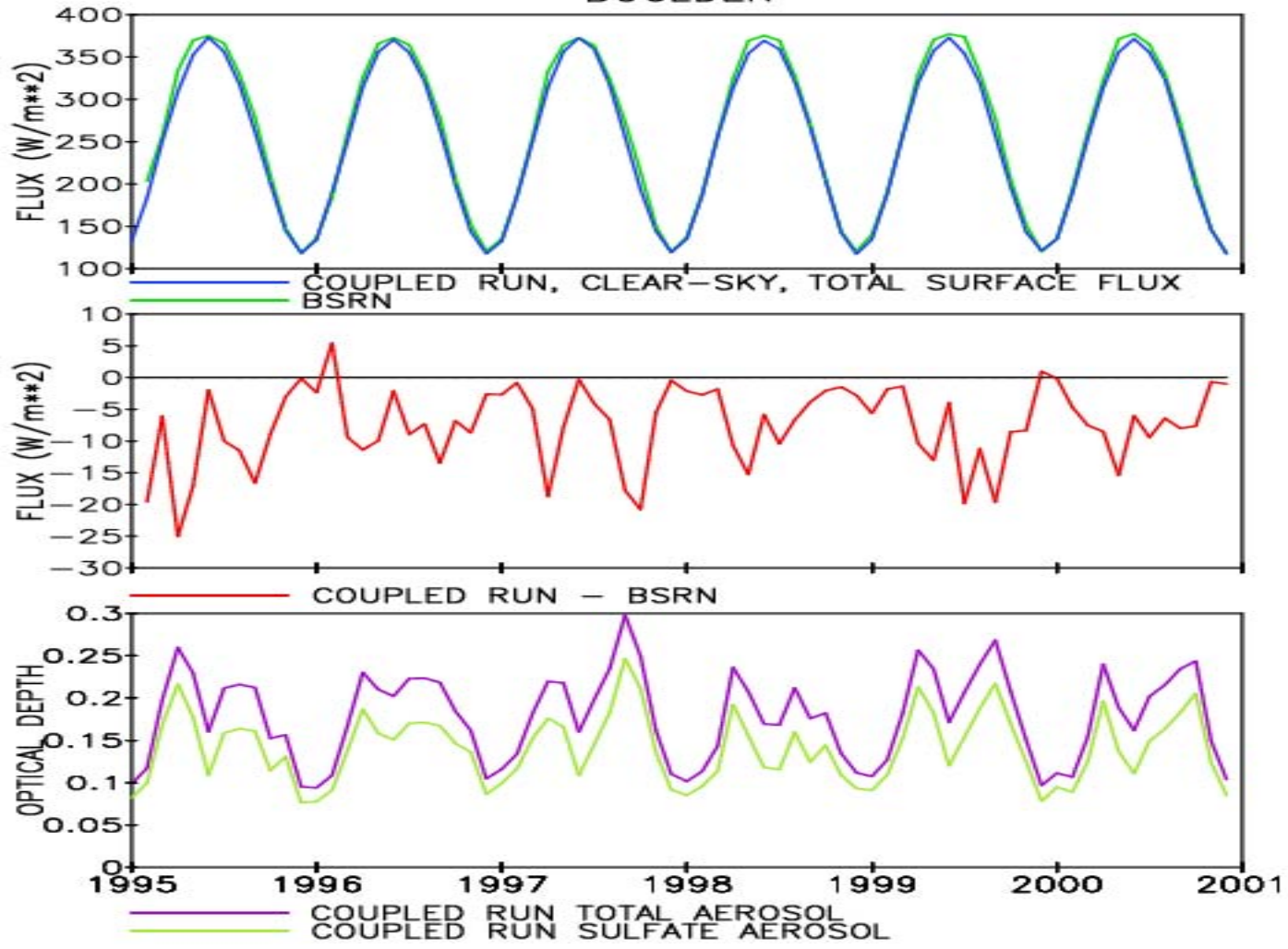




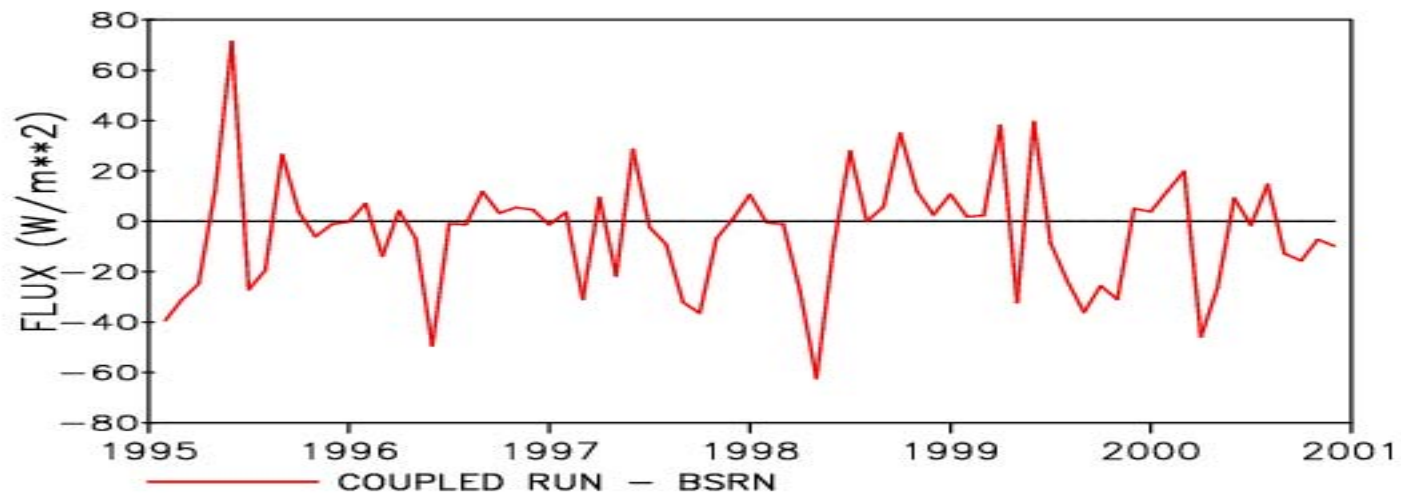
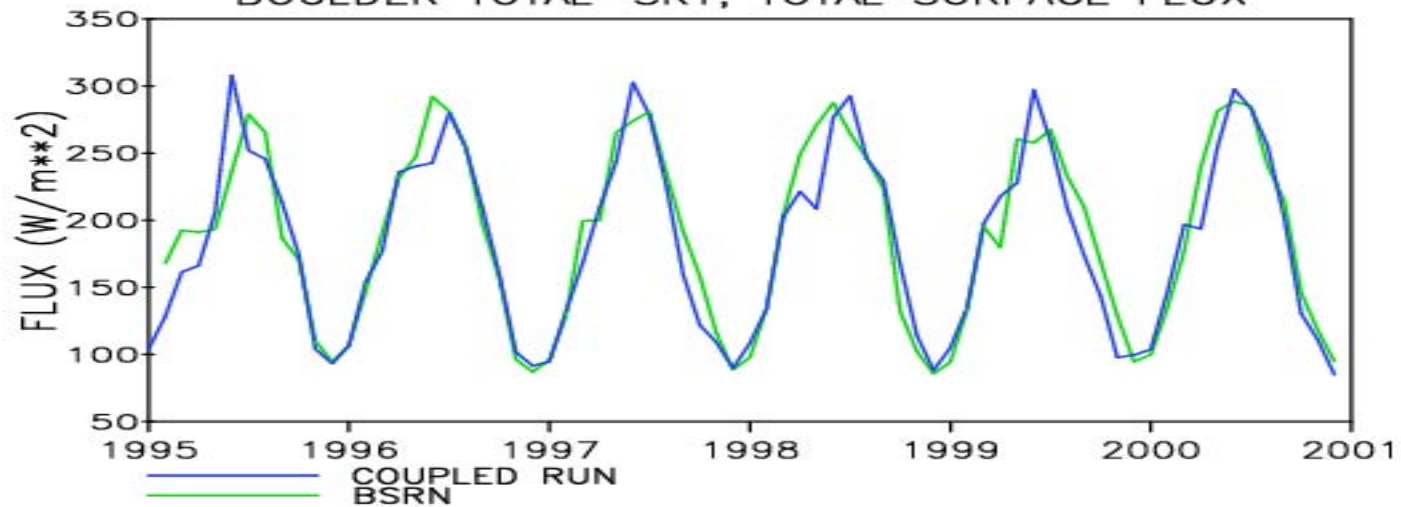




BOULDER



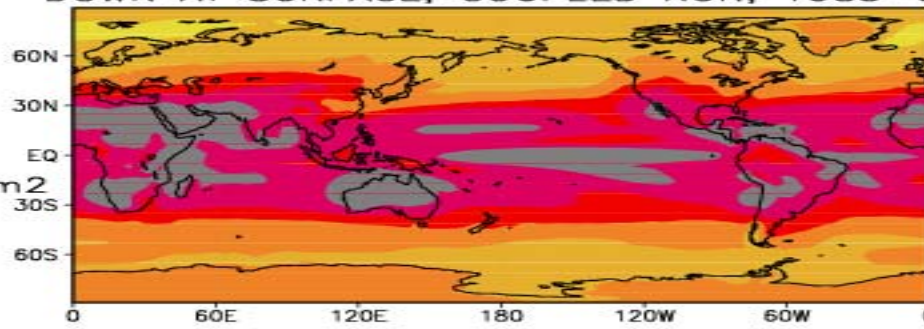
BOULDER TOTAL-SKY, TOTAL SURFACE FLUX



DOWN AT SURFACE, COUPLED RUN, 1983-91

GLOBAL
AVERAGE

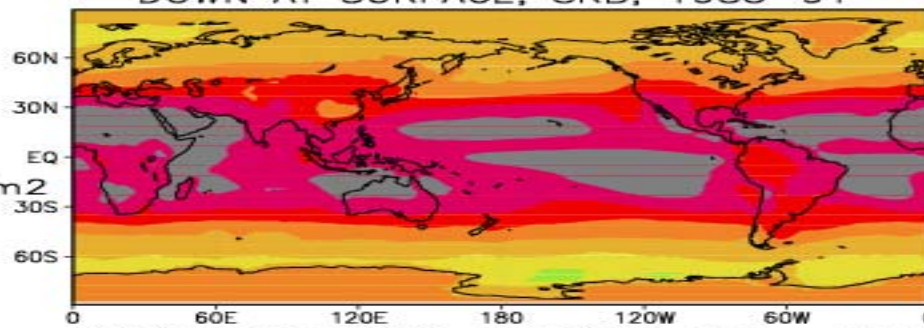
184.44 W/m²



DOWN AT SURFACE, SRB, 1983-91

GLOBAL
AVERAGE

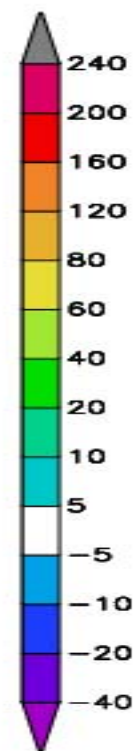
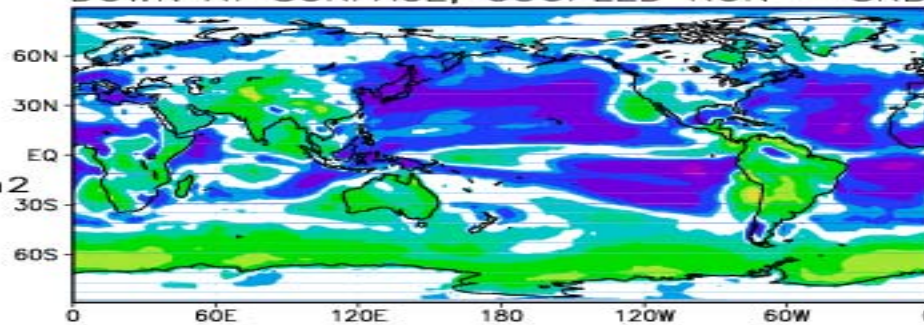
184.69 W/m²



DOWN AT SURFACE, COUPLED RUN - SRB

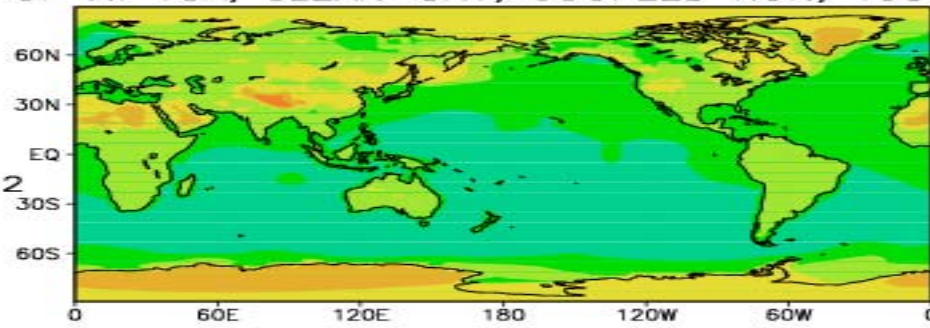
GLOBAL
AVERAGE

-0.25 W/m²



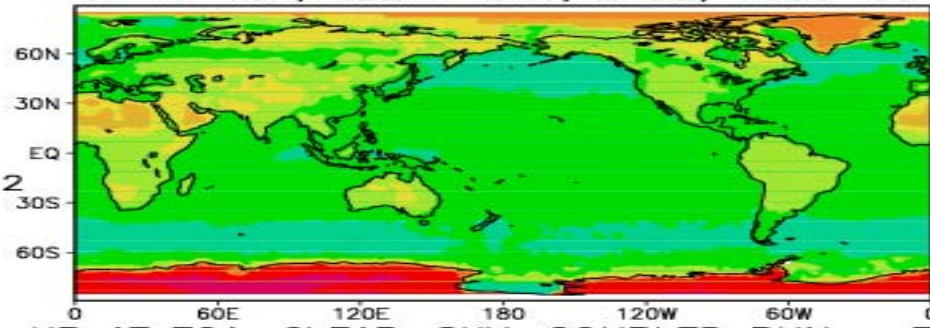
UP AT TOA, CLEAR-SKY, COUPLED RUN, 1985-89

GLOBAL
AVERAGE
54.42 W/m²



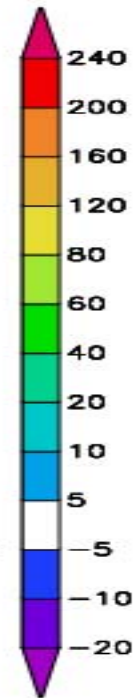
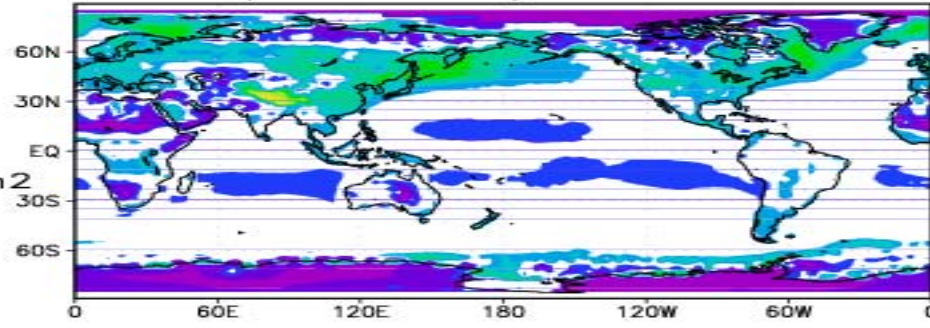
UP AT TOA, CLEAR-SKY, ERBE, 1985-89

GLOBAL
AVERAGE
56.39 W/m²



UP AT TOA, CLEAR-SKY, COUPLED RUN - ERBE

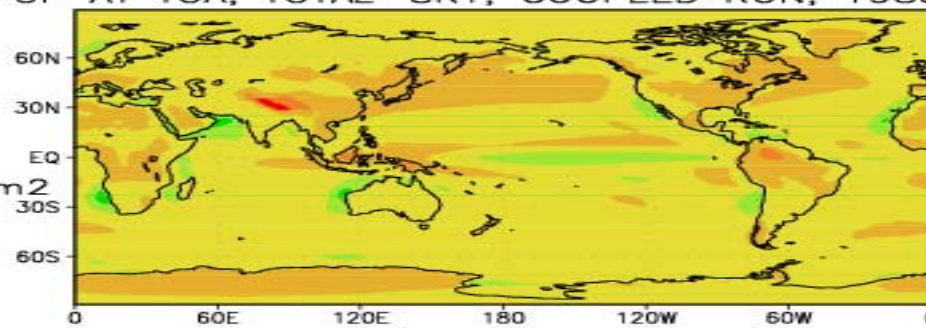
GLOBAL
AVERAGE
-1.97 W/m²



UP AT TOA, TOTAL-SKY, COUPLED RUN, 1985-89

GLOBAL
AVERAGE

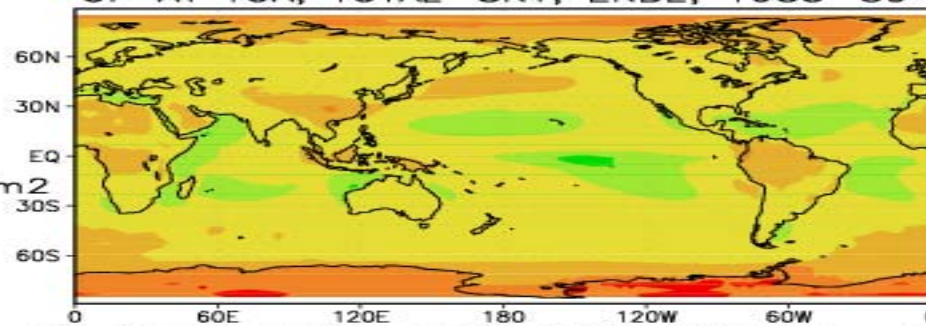
105.83 W/m²



UP AT TOA, TOTAL-SKY, ERBE, 1985-89

GLOBAL
AVERAGE

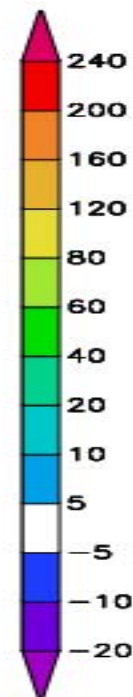
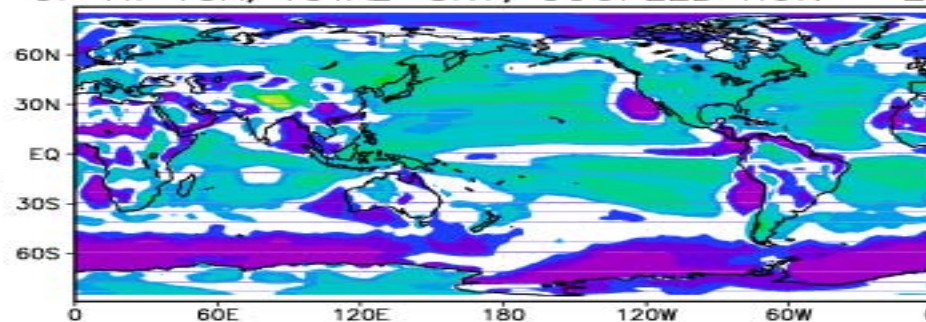
105.40 W/m²



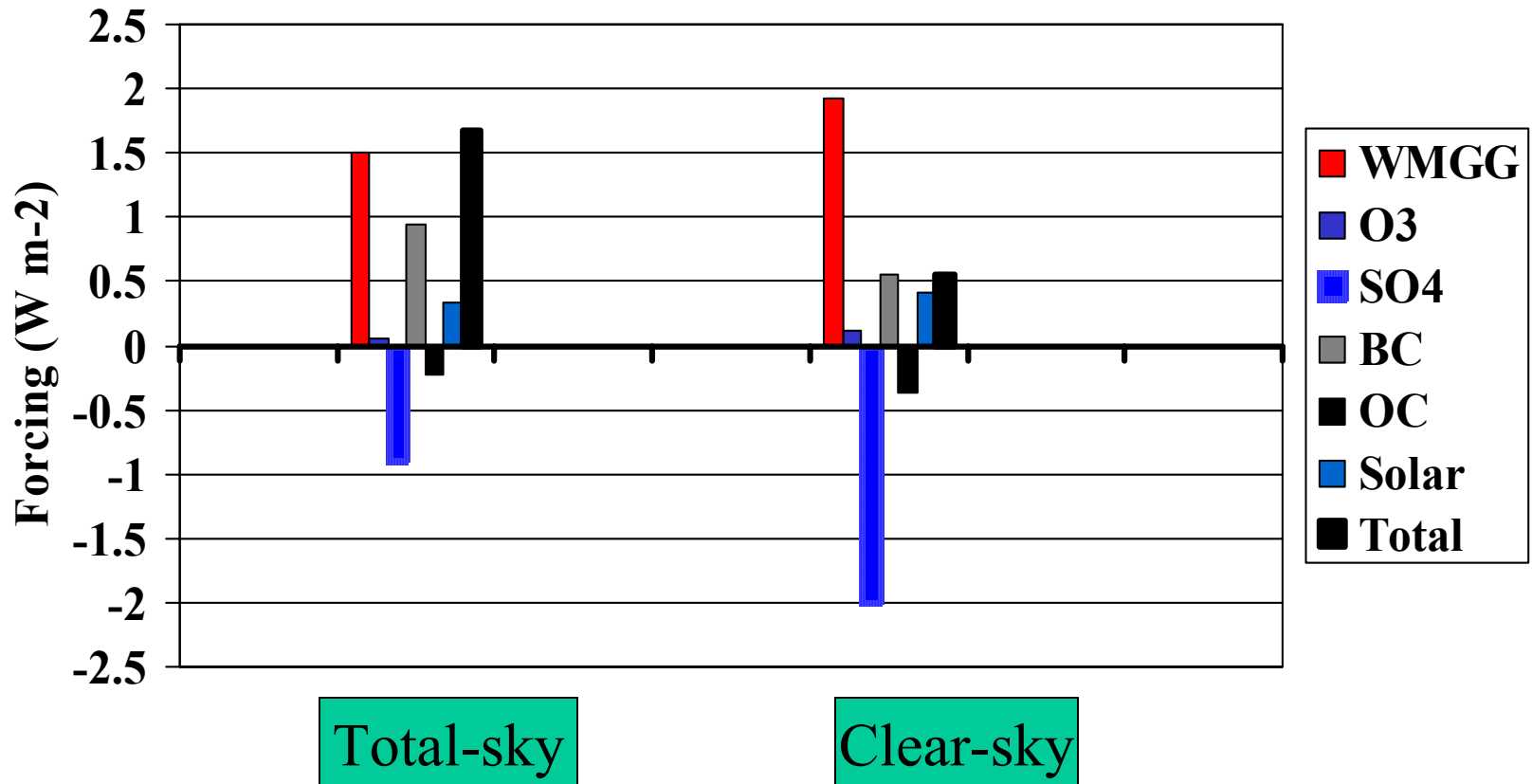
UP AT TOA, TOTAL-SKY, COUPLED RUN - ERBE

GLOBAL
AVERAGE

0.43 W/m²

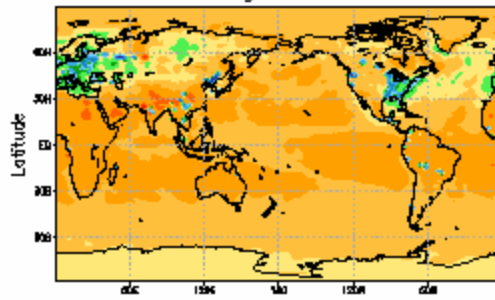


Global-annual-mean forcing TOA [1990 – 1860]

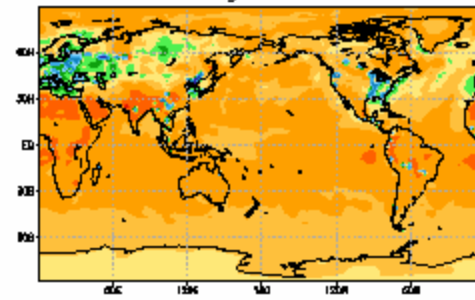


change in NETF_TOA (W/m^2)

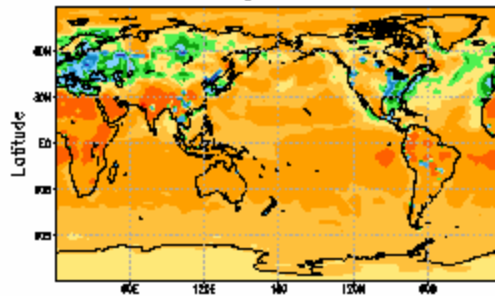
1950-1860 gbl mean = 0.790



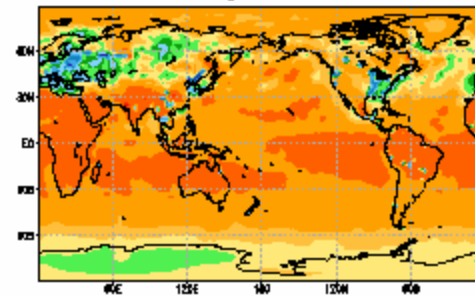
1960-1860 gbl mean = 0.956



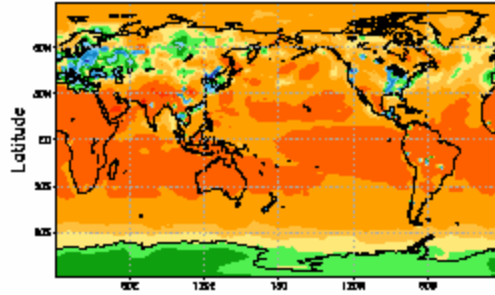
1970-1860 gbl mean = 0.840



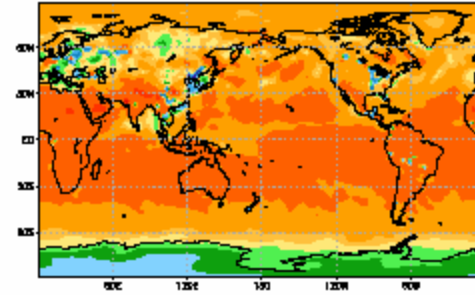
1980-1860 gbl mean = 1.355



1990-1860 gbl mean = 1.560



2000-1860 gbl mean = 1.859

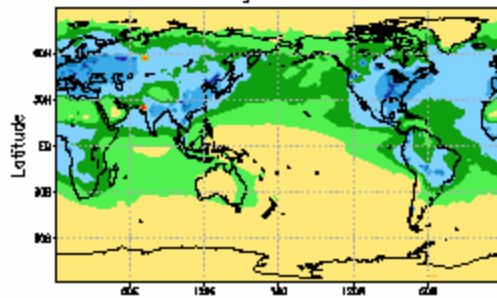


Longitude

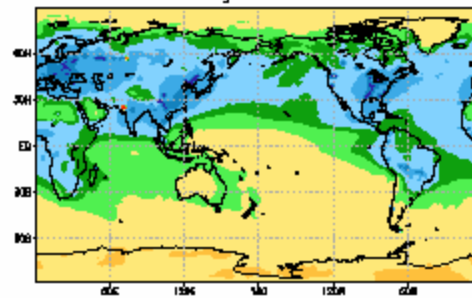
Longitude

change in NETF_SFC (W/m^2)

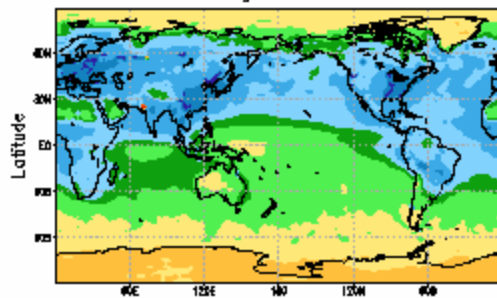
1950-1860 gbl mean = -0.647



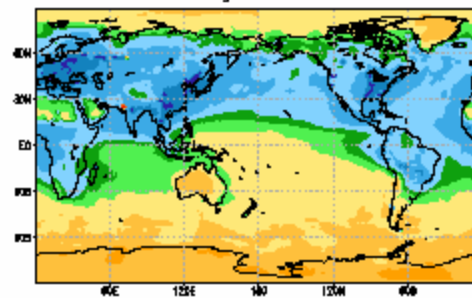
1960-1860 gbl mean = -0.912



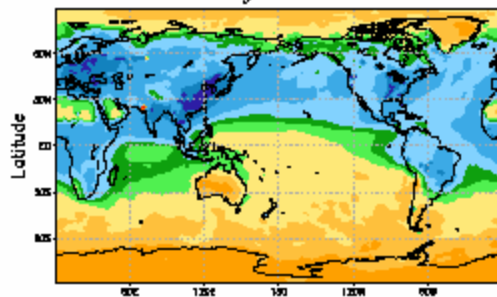
1970-1860 gbl mean = -1.360



1980-1860 gbl mean = -1.177

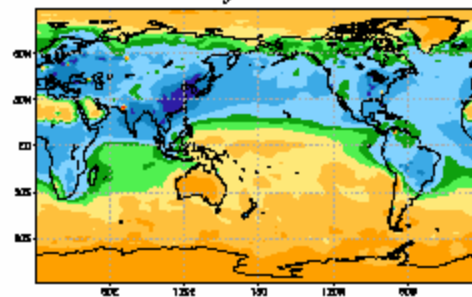


1990-1860 gbl mean = -1.248



Longitude

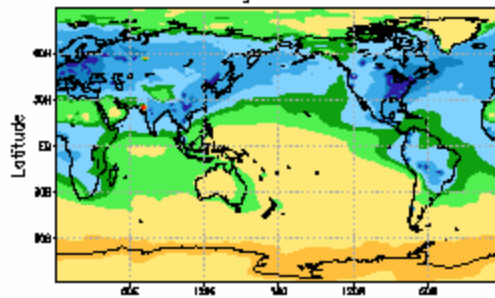
2000-1860 gbl mean = -1.009



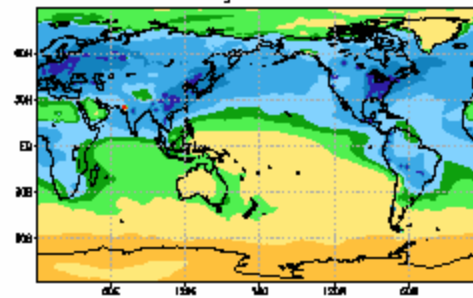
Longitude

change in NETF_SFC_CLR (W/m^2)

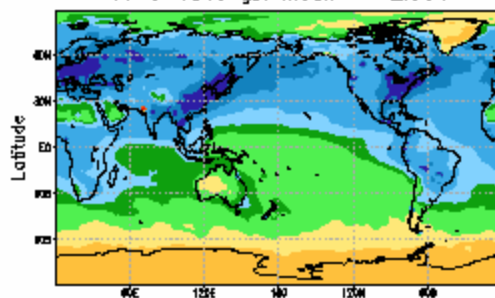
1950-1860 gbl mean = -1.121



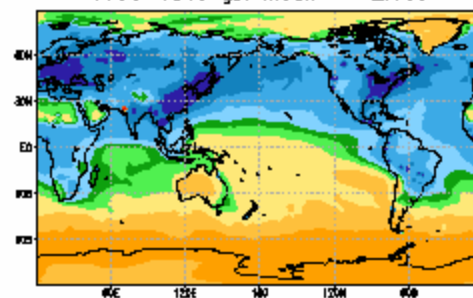
1960-1860 gbl mean = -1.574



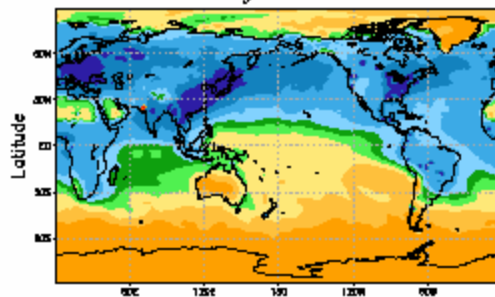
1970-1860 gbl mean = -2.354



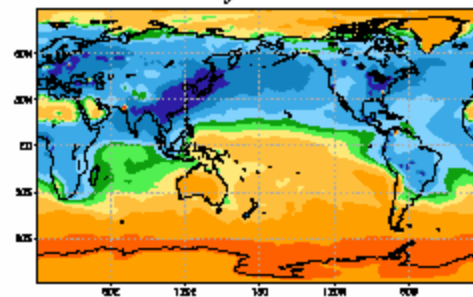
1980-1860 gbl mean = -2.069



1990-1860 gbl mean = -2.188



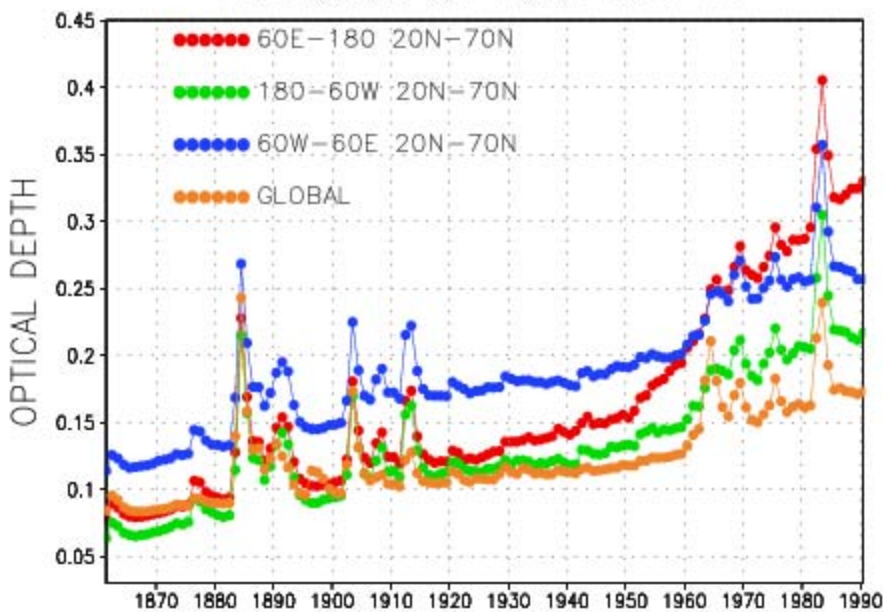
2000-1860 gbl mean = -1.802



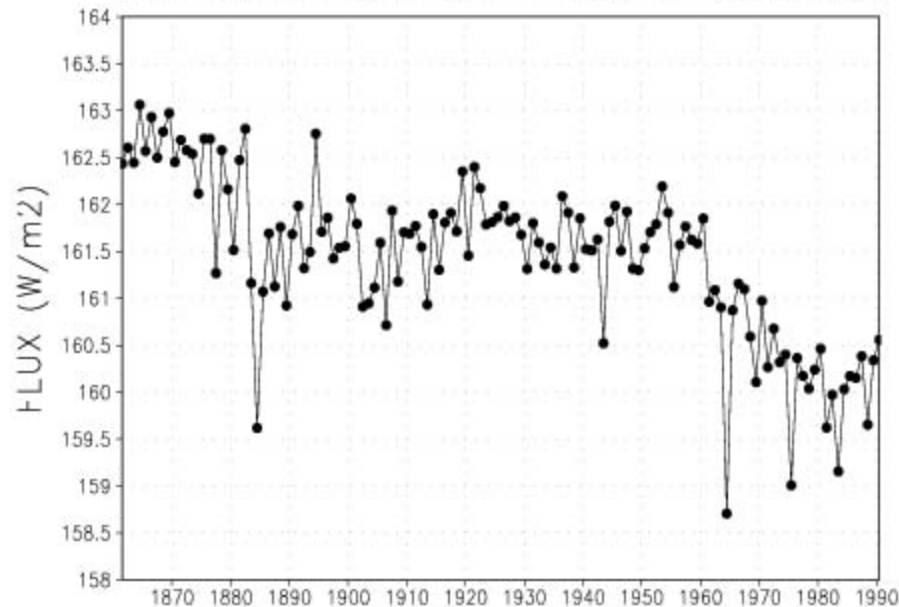
NET CLEAR-SKY SW FLUX AT SURFACE



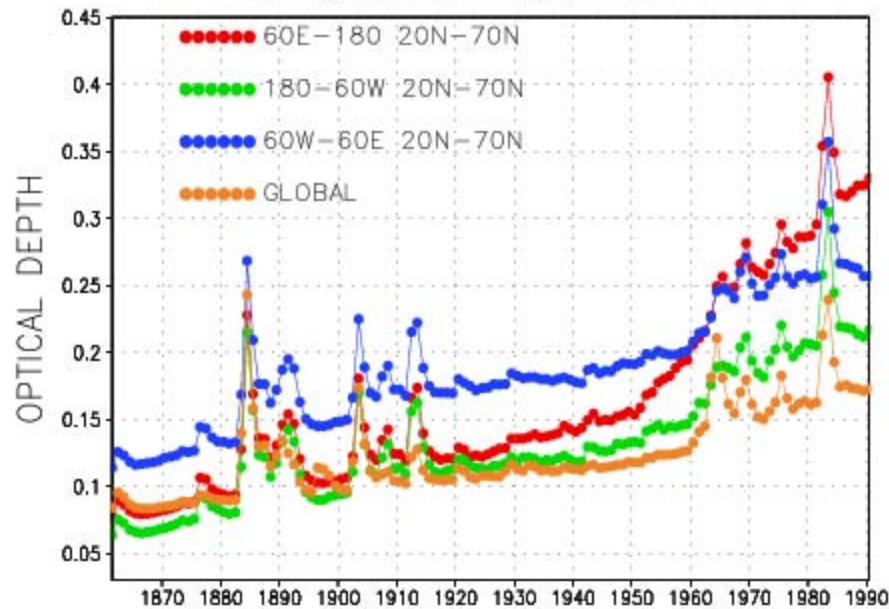
AEROSOL OPTICAL DEPTH



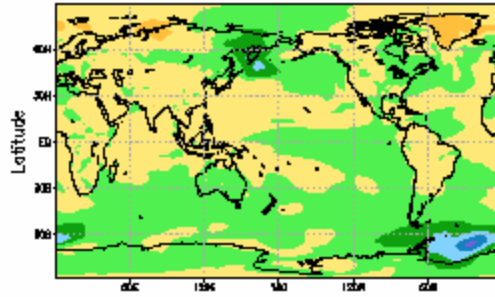
NET TOTAL-SKY SW FLUX AT SURFACE



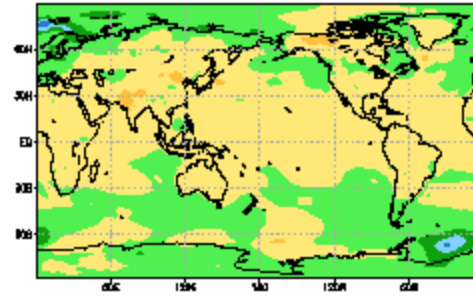
AEROSOL OPTICAL DEPTH



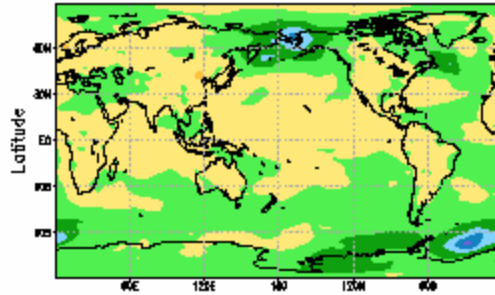
T_REF ann 1950 - 1860 (K)
gbl mean = -0.071



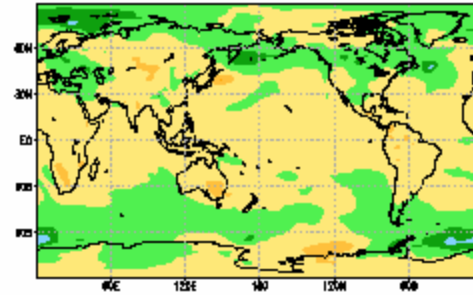
1960-1860 gbl mean = 0.120



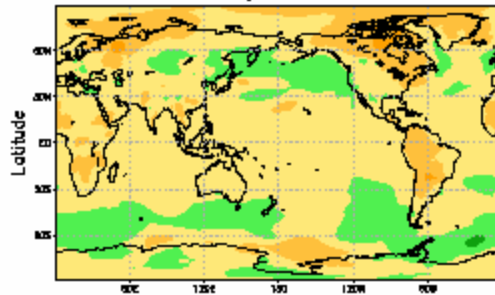
1970-1860 gbl mean = -0.079



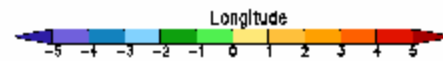
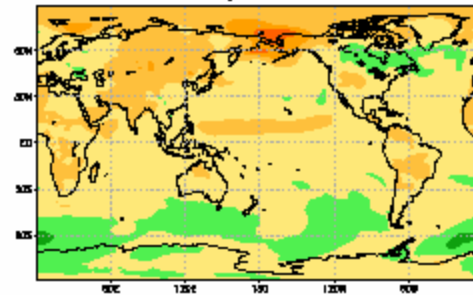
1980-1860 gbl mean = 0.131



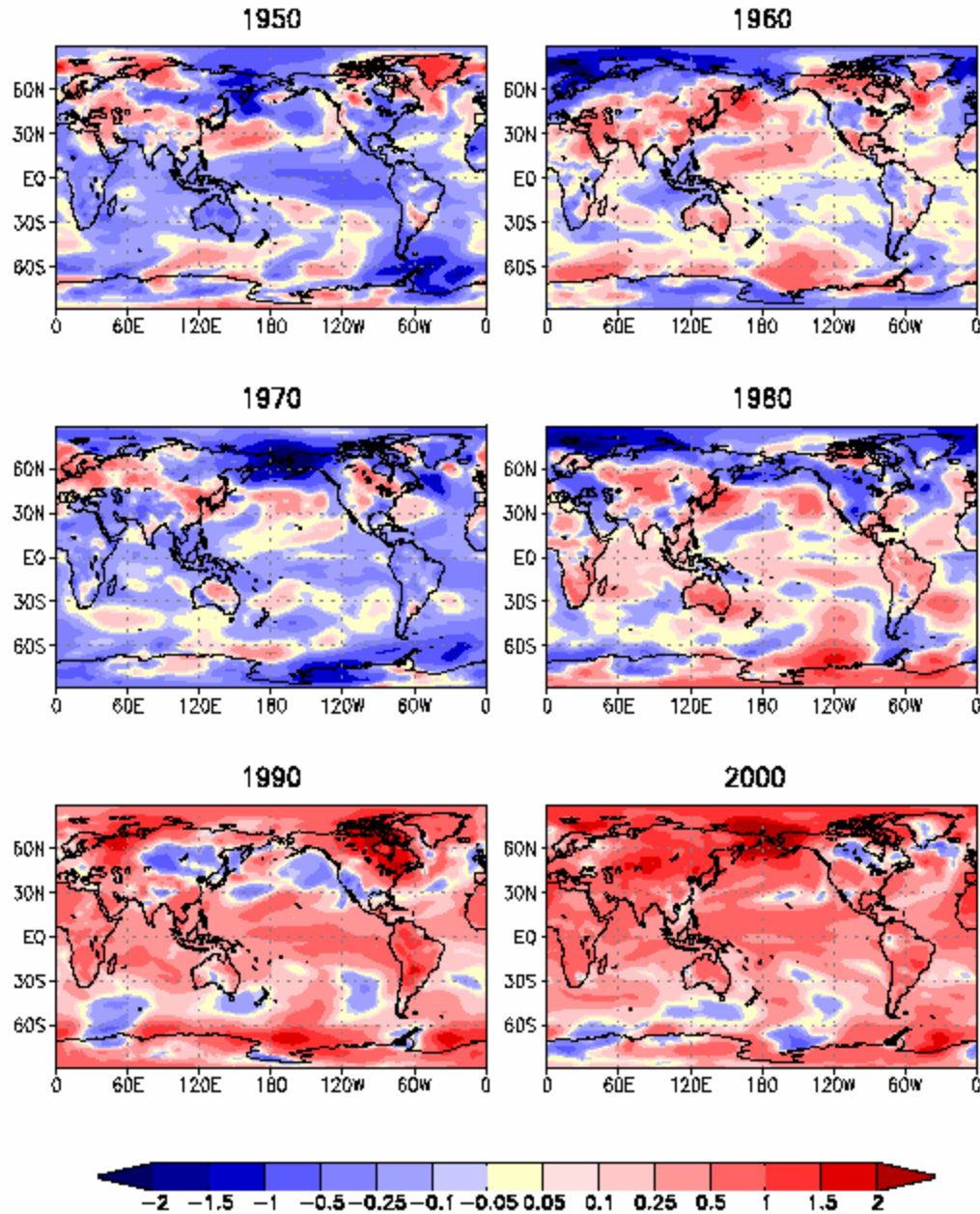
1990-1860 gbl mean = 0.447



2000-1860 gbl mean = 0.582



CM20 Annual T_ref anomalies (1950,60,70,80,90,2000)



NCEP Annual T_ref anomalies (1950,60,70,80,90,2000)

