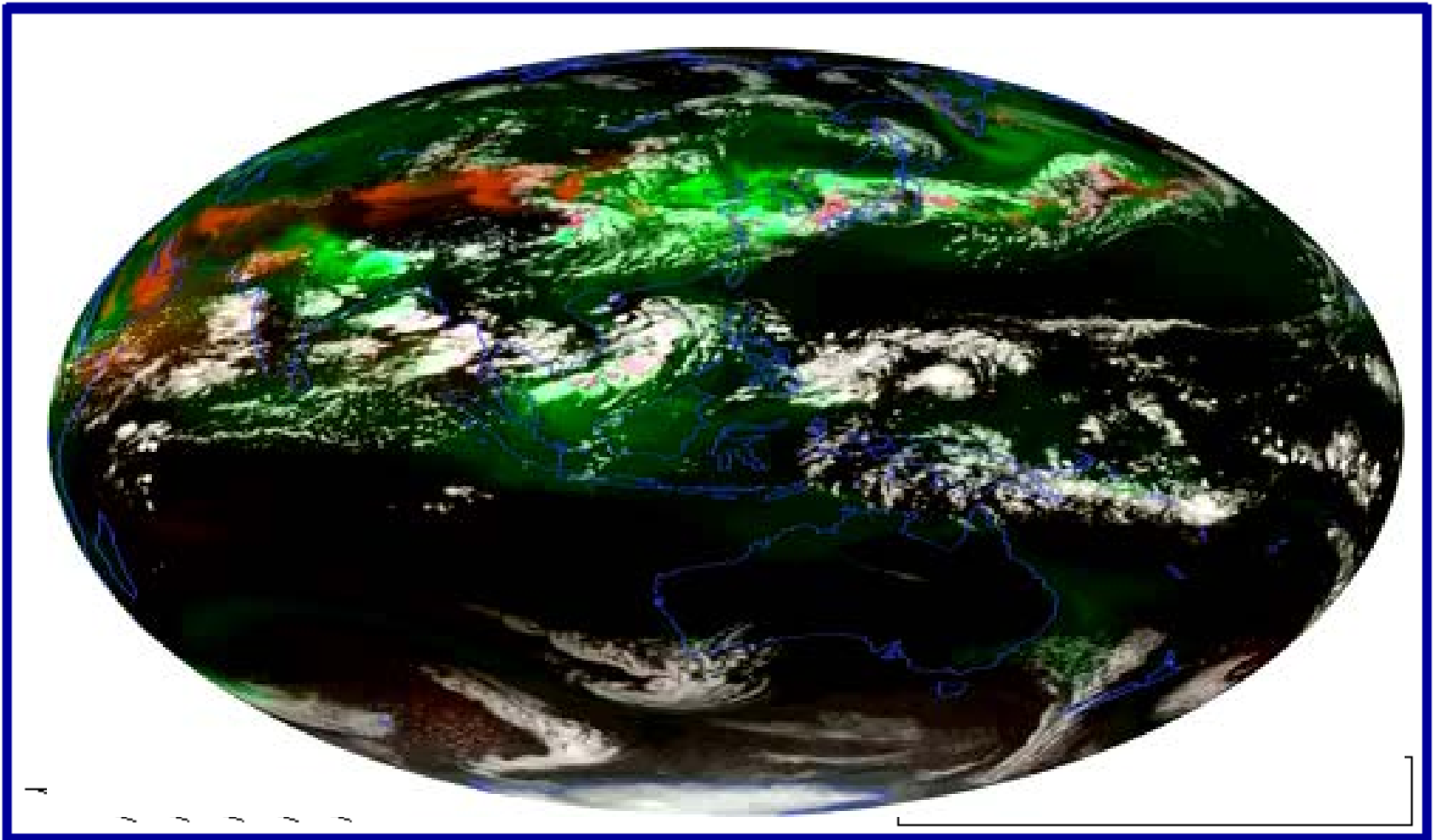
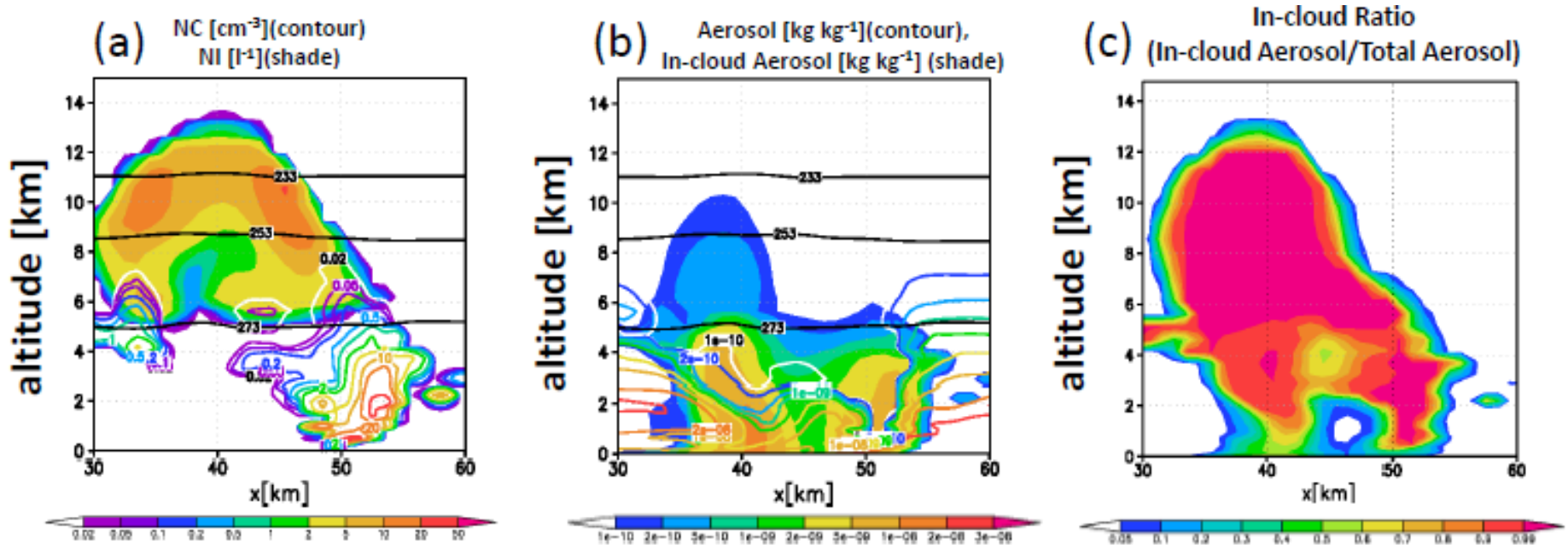


Modeling of wet deposition process coupled with a double moment bulk cloud microphysics scheme

*Tatsuya Seiki, Daisuke Goto, Kentaro Suzuki, Masaki Satoh, Hirofumi Tomita



Test Case: Isolated Tropical Squall Line



Vertical cross section of (a) N_c, N_i , (b) q_a, q_{ain} , (c) $C_{incloud}$ along $y = 6\text{km}$ at $t = 1\text{hr}$

Nucleation scavenging/total				98%	
Ice Nucleation Scavenging/total				0.00094%	
Below Cloud Scavenging/total				1.8%	
Cloud to BCS	Rain to BCS	Ice to BCS	Snow to BCS	Graupel to BCS	
3.0%	97%	0.021%	0.18%	0.24%	