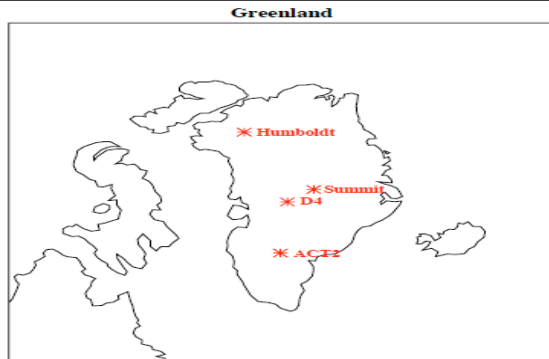


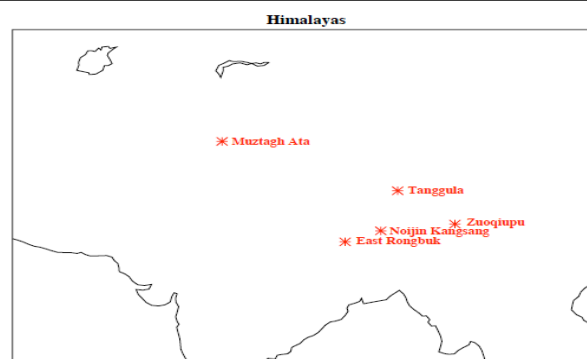
IMPACTS OF CARBONACEOUS AEROSOLS IN REMOTE REGIONS, 1850-2100

SUSANNE E BAUER^(1,2), ALEXANDRA BAUSCH⁽²⁾, LARISSA S NAZARENKO⁽²⁾, KOSTAS TSIGARIDIS^(1,2) & JOE McCONNELL⁽³⁾

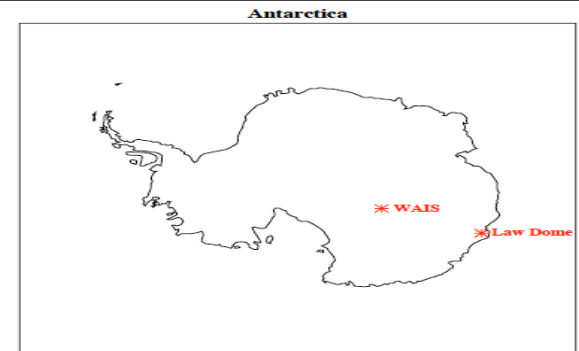
GREENLAND



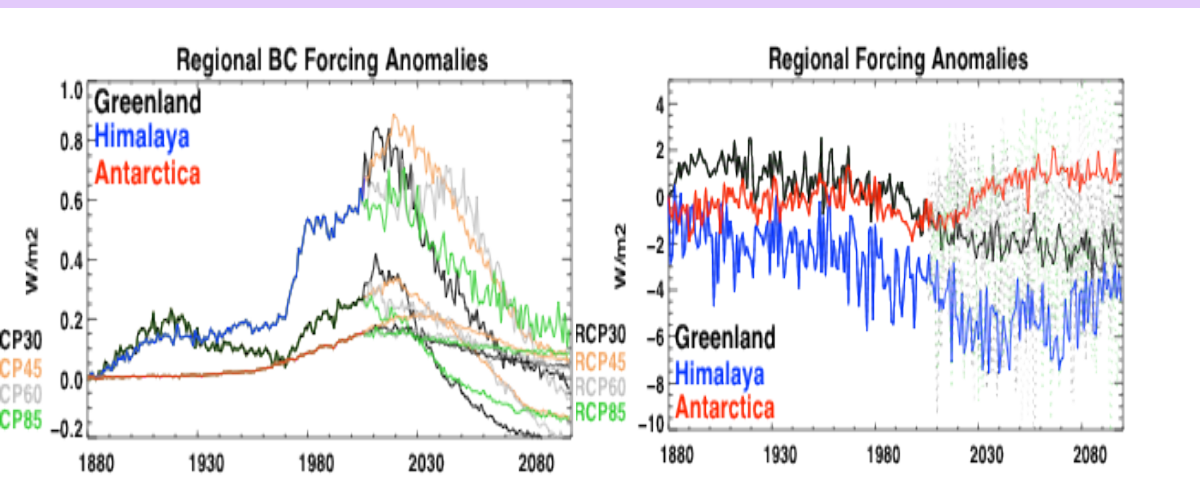
HIMALAYA



ANTARCTICA



FUTURE SCENARIOS



★ Evaluation of historic BC deposition with ice core measurements from 11 different stations in three different regions

★ Using three different models

★ Future projects of regional BC effects over snow and ice